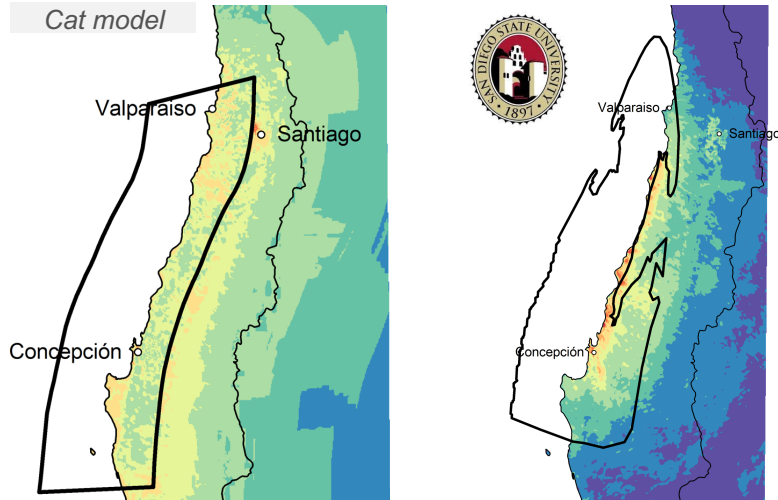
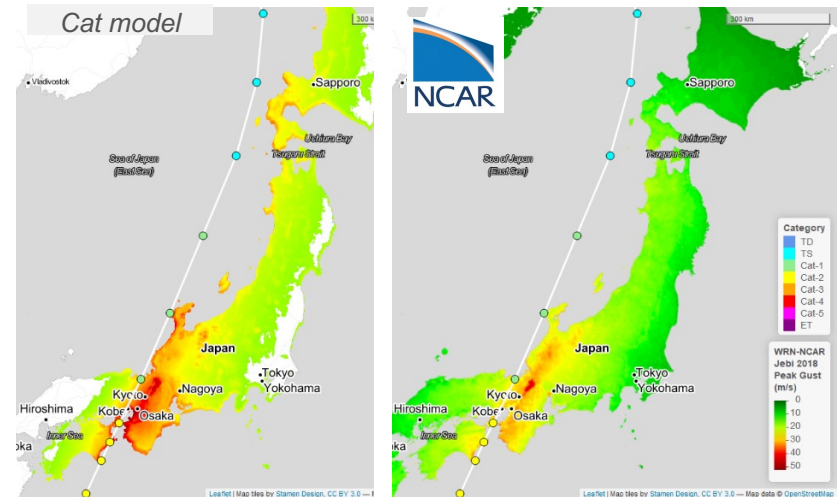


Model validation

As models become more sophisticated, model validation needs to keep innovating



Shaking intensity for a M9 event from a catastrophe model (left) and from 3D ground motion simulation (right)

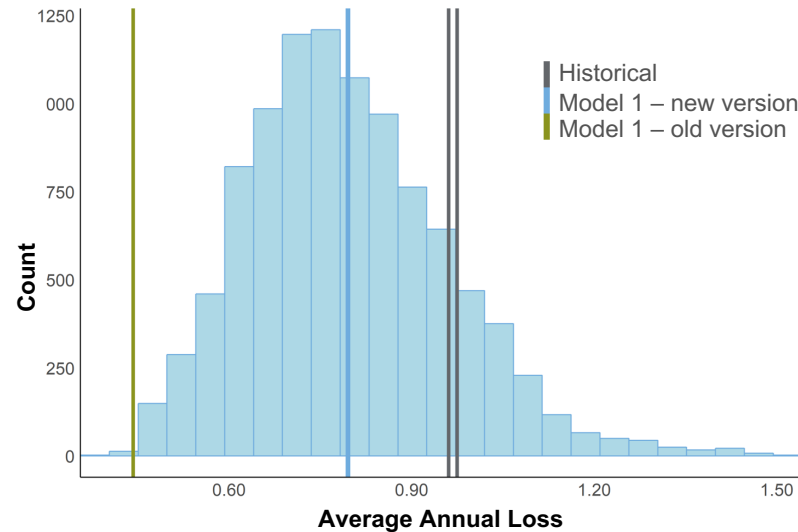


Wind intensity for Typhoon Jebi from a catastrophe model (left) and from wind simulation (right)

Use reference models different to vendors – particularly for new models – and collaborate with academics to “bridge the gap”

Model validation

As models becomes more sophisticated, model validation needs to keep innovating



Historical losses sampled for a 30+ year long period from the cat model (histogram) vs modelled AAL and historical AAL

Focus on tests that have material impact to losses and make best use of historical data with limited time span