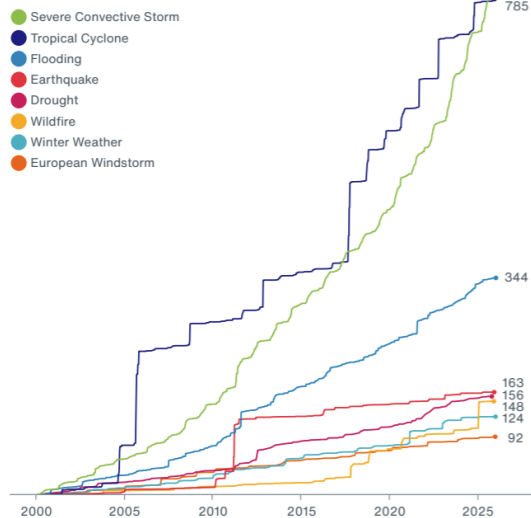


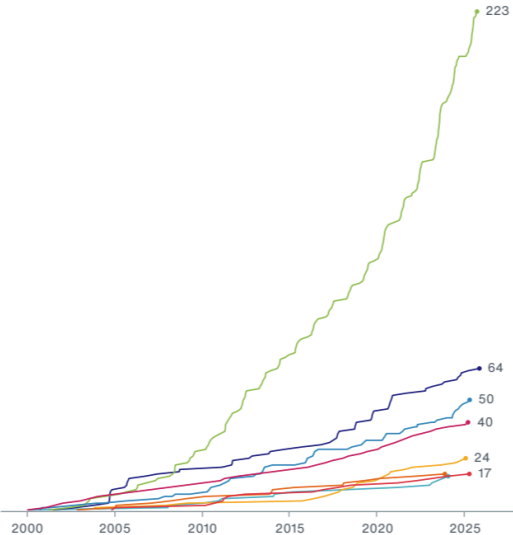
Factors affecting the baseline period

Hazard, Exposure and Vulnerability

Insured Losses (2025 \$B)

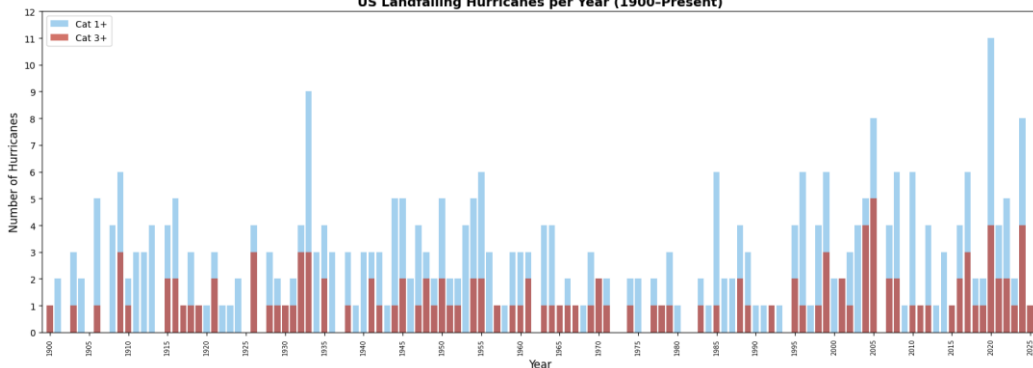


Count of Billion-Dollar Events



Data: Aon Catastrophe Insight

US Landfalling Hurricanes per Year (1900-Present)



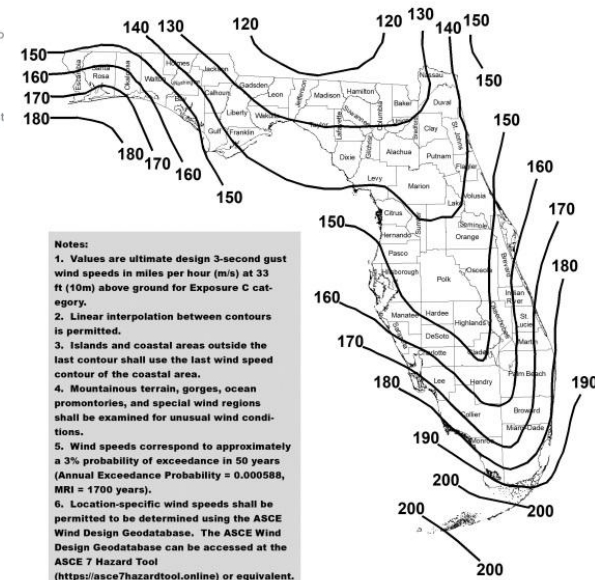
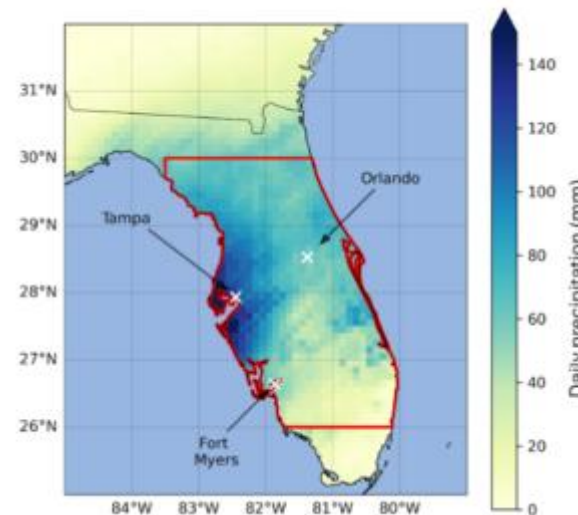
In the wake of Hurricane Ian, Aon sent a team of experts to the affected area to understand the lessons learned from this storm.

Key Takeaways

- 01** Hurricane Ian's tremendous impact caused \$95B in economic loss, with an estimate \$52.5B in insured loss.
- 02** The state of Florida has implemented stronger building codes following frequent hurricanes in the region.
- 03** Research from Aon shows how homeowners and insurers can continuously learn from damage to build more resilient homes.

In the wake of Hurricane Ian, Aon sent a team of engineers, meteorologists and hydrologists to the impacted area to understand the lessons learned from this storm to help homeowners, government and insurers alike make better decisions in the future to create more resilient and safe buildings.

Our damage assessment revealed that outdated construction can lead to catastrophic damage but that Florida's enhanced building code was successful in protecting homes. Other states can also adopt these measures to protect communities.



Florida Landfalling Hurricanes vs Population Growth (1900-Present)

