


The background is a dark gradient with scattered squares in shades of orange, yellow, and red. A prominent orange-bordered box is centered on the page, containing the main text.

Wildfire Modelling: Unleashing Reinsurance Potential

Jamie Knippen
Senior Product Manager

A small yellow square icon to the left of the CoreLogic logo.

CoreLogic[®]

 Yahoo Finance

Limited home insurance options in California as major carriers pull back

 San Francisco Chronicle

California home insurance crisis: Insurers still selling policies

 Newsweek

California Homeowners 'Dumbfounded' After Insurance Premiums Double

 KPBS

Home insurance crisis forcing thousands of San Diego homeowners onto costly FAIR Plan

 Los Angeles Times

Column: Unaffordable homeowner's insurance is leaving Californians exposed to the elements

 San Francisco Chronicle

California insurance crisis: 2 more insurers withdraw from state

 The North Bay Business Journal

California insurers get rate-hike approvals as state tries to shore up coverage

 Spectrum News

California's home insurance crisis, explained

 KMPH

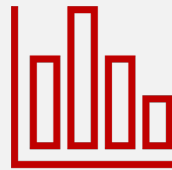
Home insurance skyrockets nearly 50% in 5 years, people are choosing to go without

High-Fidelity Modelling



300,000 years of simulation

Across all perils



**Valuable insights for
high-frequency / low-severity events +
low-frequency/high-severity events**



**Better captures the tails that drive the
reinsurance purchase**

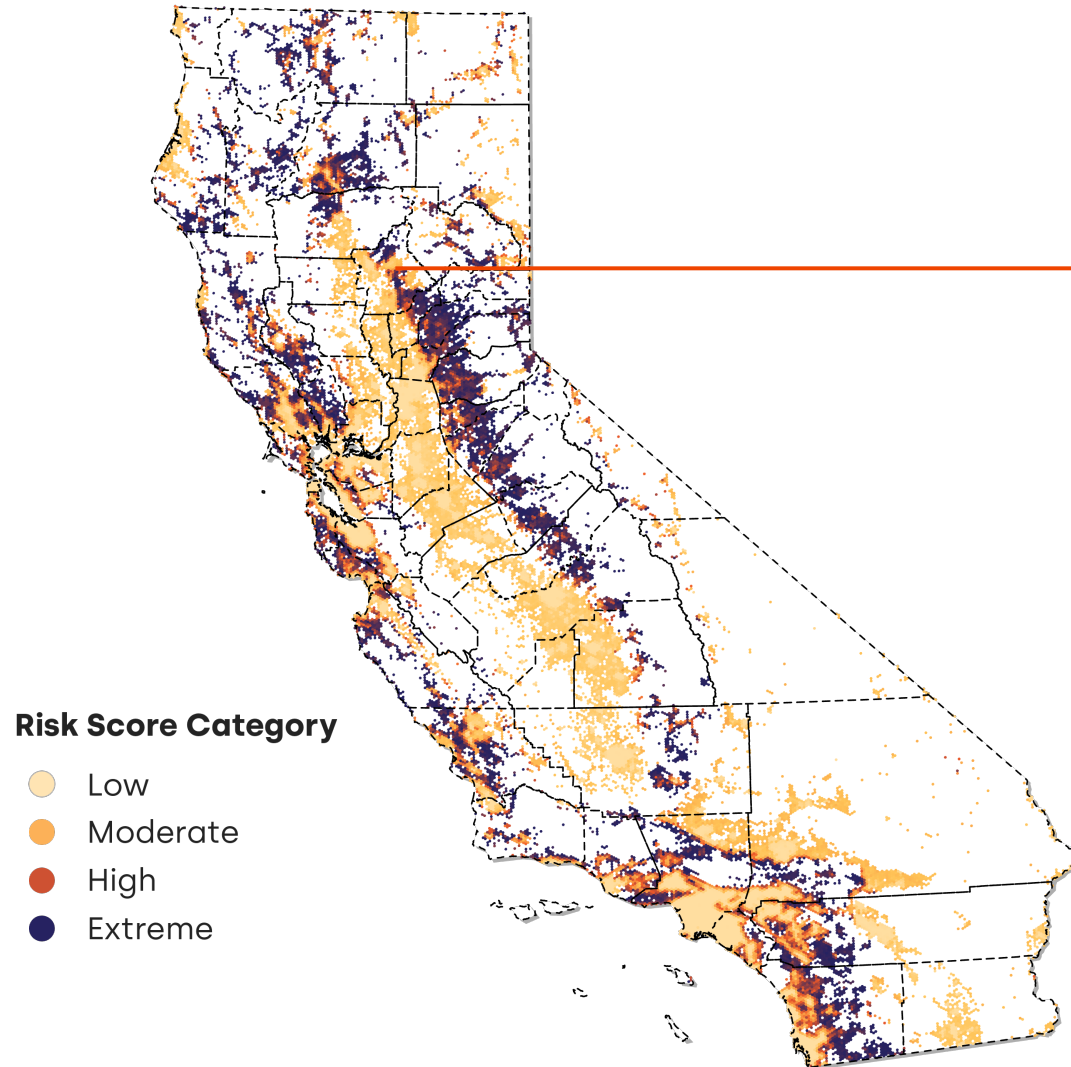


Addressing Concentration Issues

by identifying the truth on the ground

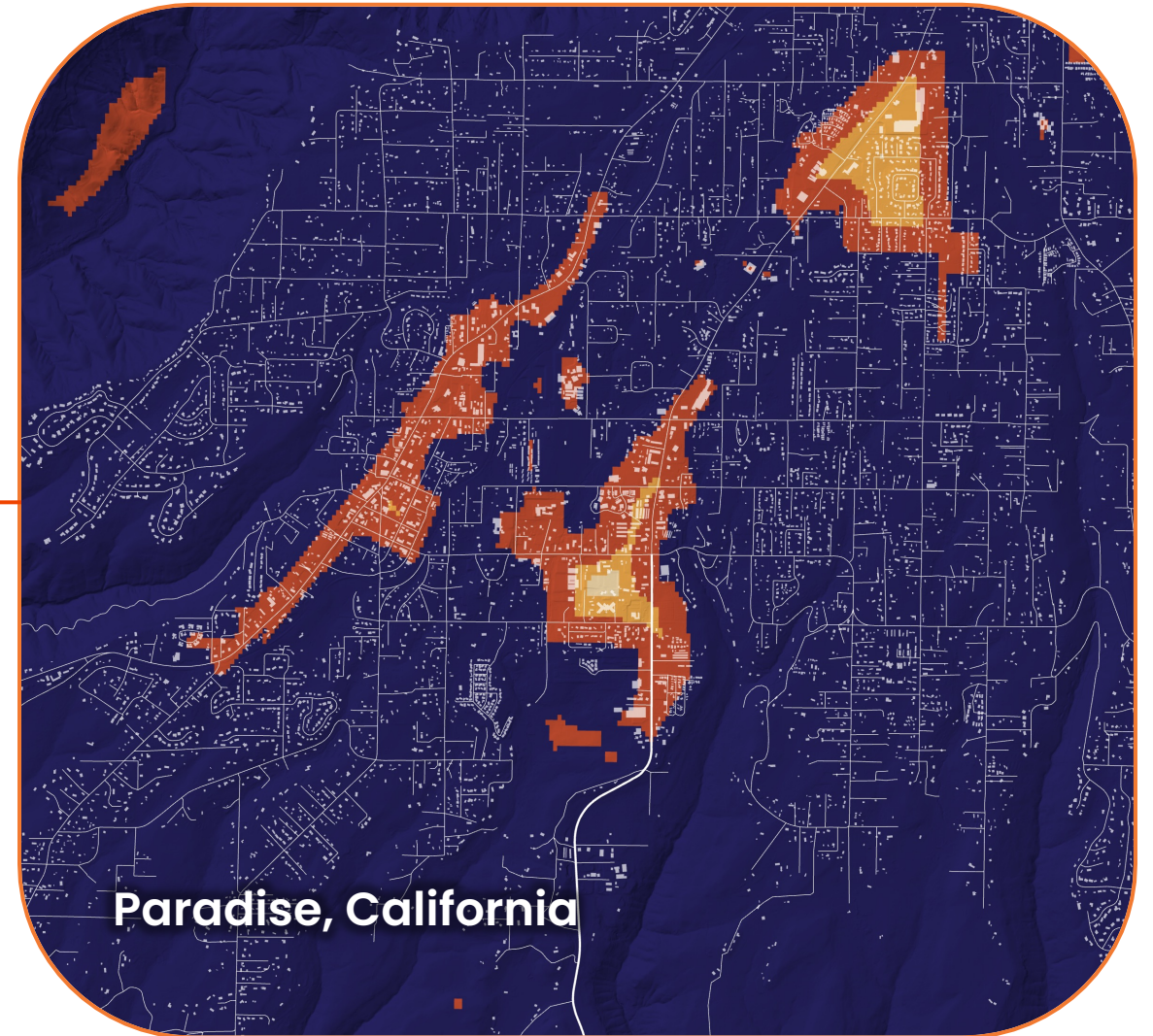
CoreLogic

Wildfire Risk Score of all the Residential Areas in California



Risk Score Category

- Low
- Moderate
- High
- Extreme

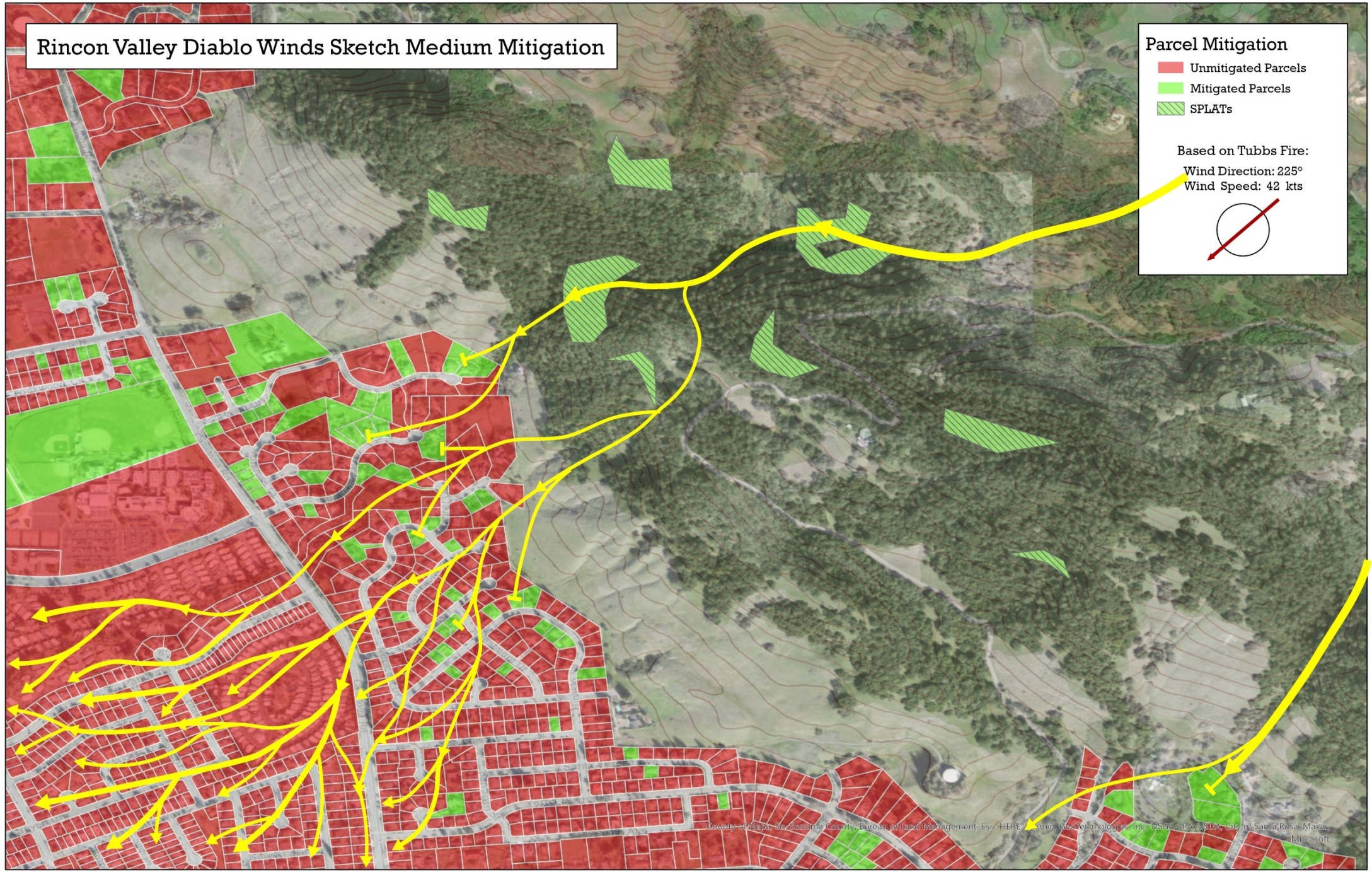



Rincon Valley Diablo Winds Sketch Medium Mitigation

Parcel Mitigation

- Unmitigated Parcels
- Mitigated Parcels
- SPLAT's

Based on Tubbs Fire:
Wind Direction: 225°
Wind Speed: 42 kts



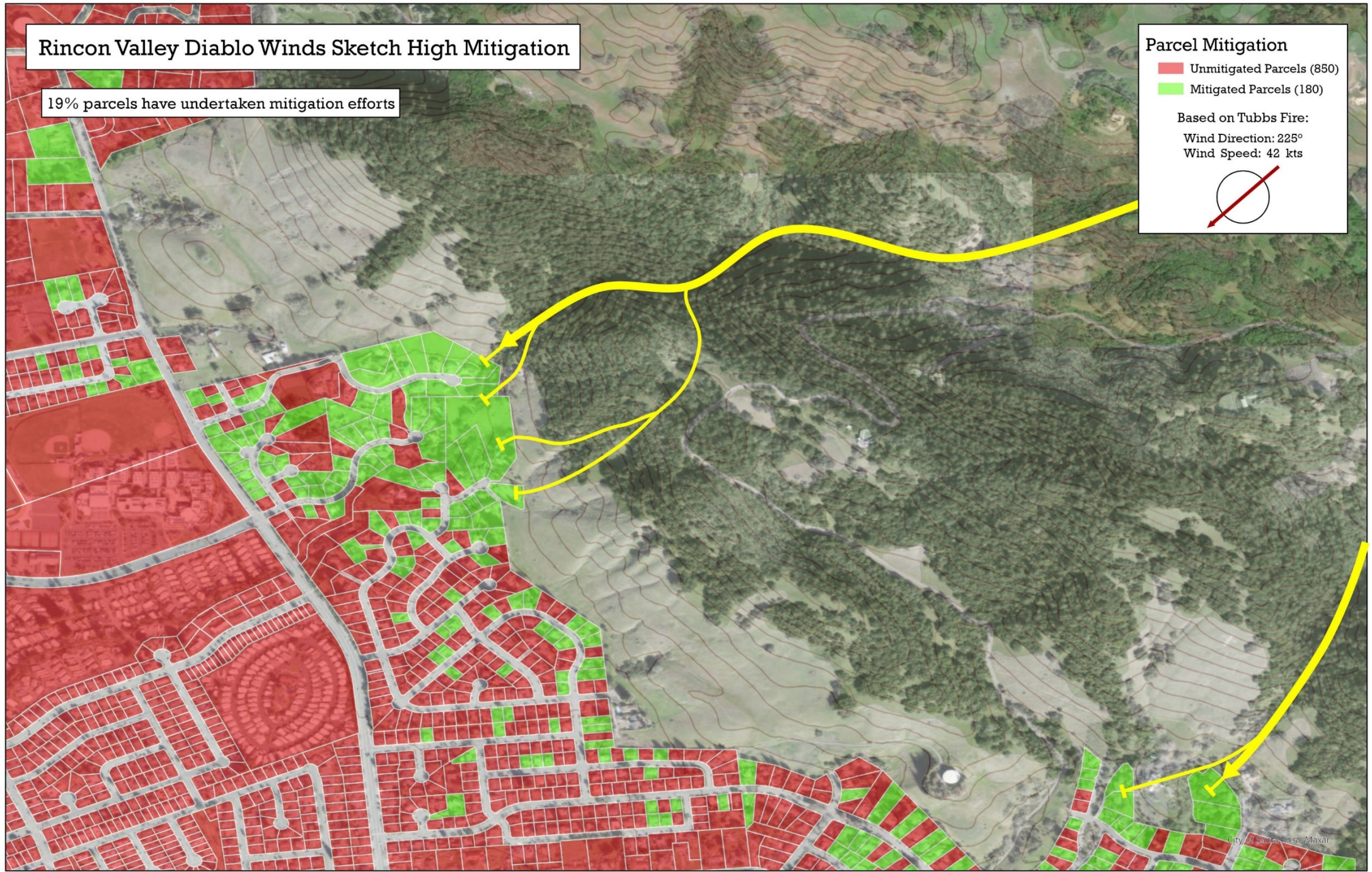

Rincon Valley Diablo Winds Sketch High Mitigation

19% parcels have undertaken mitigation efforts

Parcel Mitigation

- Unmitigated Parcels (850)
- Mitigated Parcels (180)

Based on Tubbs Fire:
Wind Direction: 225°
Wind Speed: 42 kts



A MILLIMAN AND CORELOGIC REPORT
Prepared with funding from the California Resilience Challenge Grant

Town of Paradise California Resilience Challenge Task 1 to Task 4

Risk Reduction, Climate Change, and Insurance Premiums

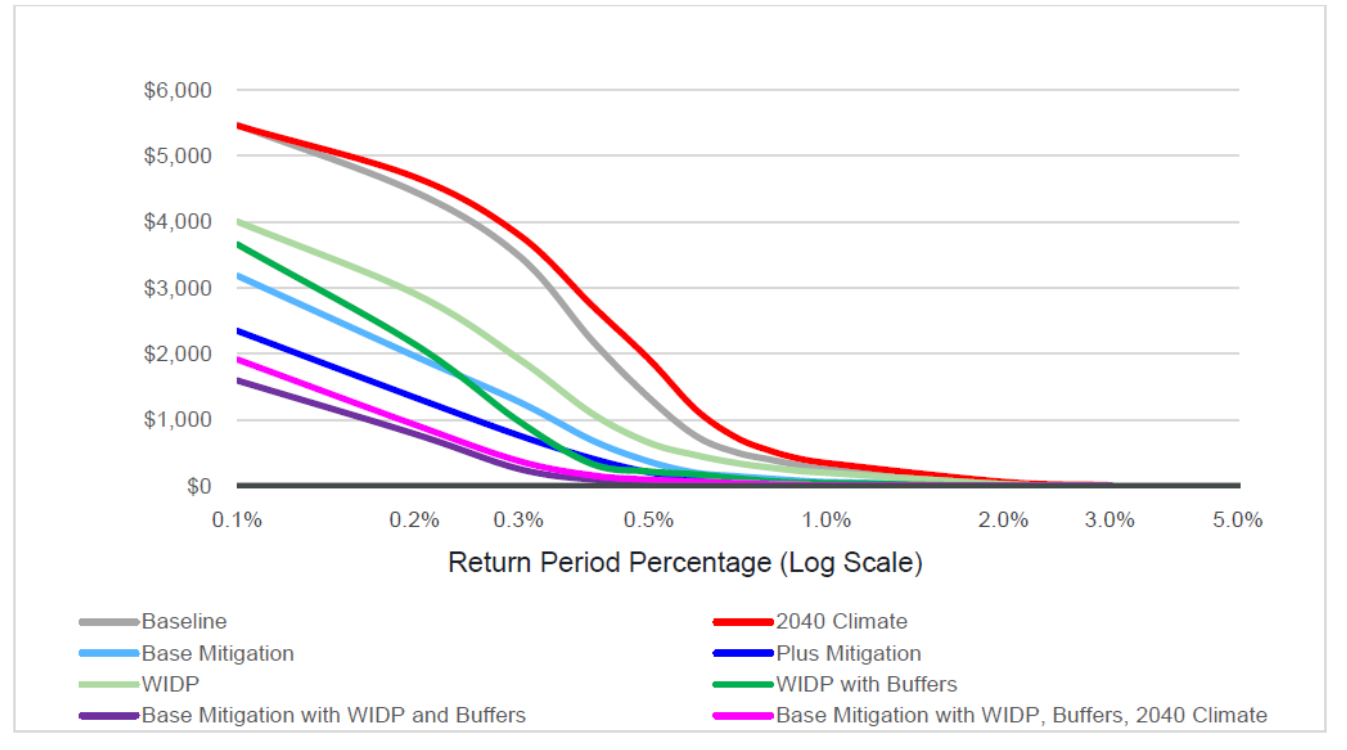
April 2023

MILLIMAN
Matt Chamberlain FCAS, MAAA
Robert Lee, FCAS, MAAA
Taylor Deacon
Nancy Watkins, FCAS, MAAA

CORELOGIC
Kent David
Fan Lei
Ilyes Meftah



FIGURE 13: AGGREGATE EXCEEDANCE PROBABILITY CURVE, ALL SCENARIOS



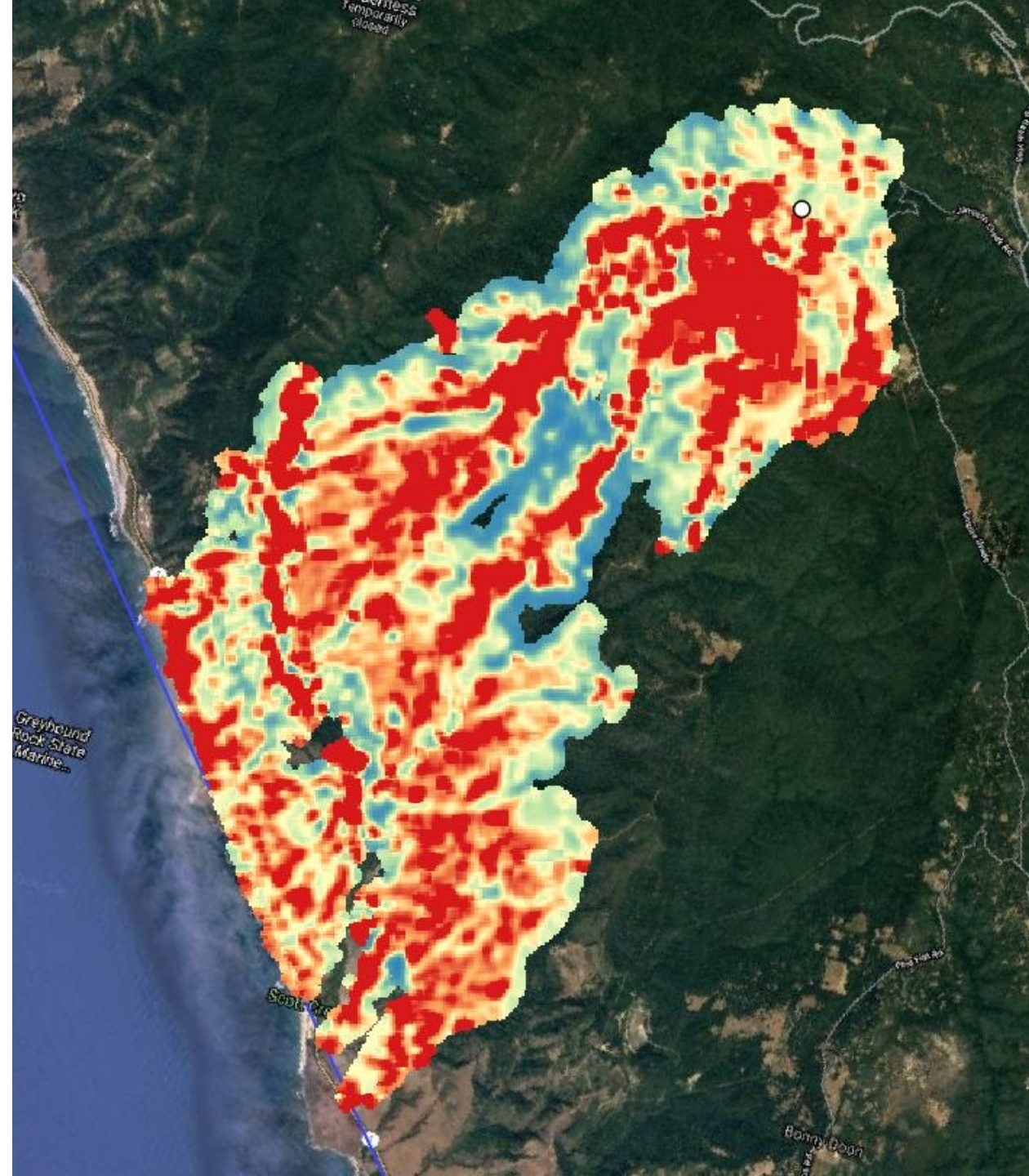
What does a modeled fire look like?

Millions of Simulated Events Representative of Real Fires

Shown: Single ignition near Santa Cruz, CA

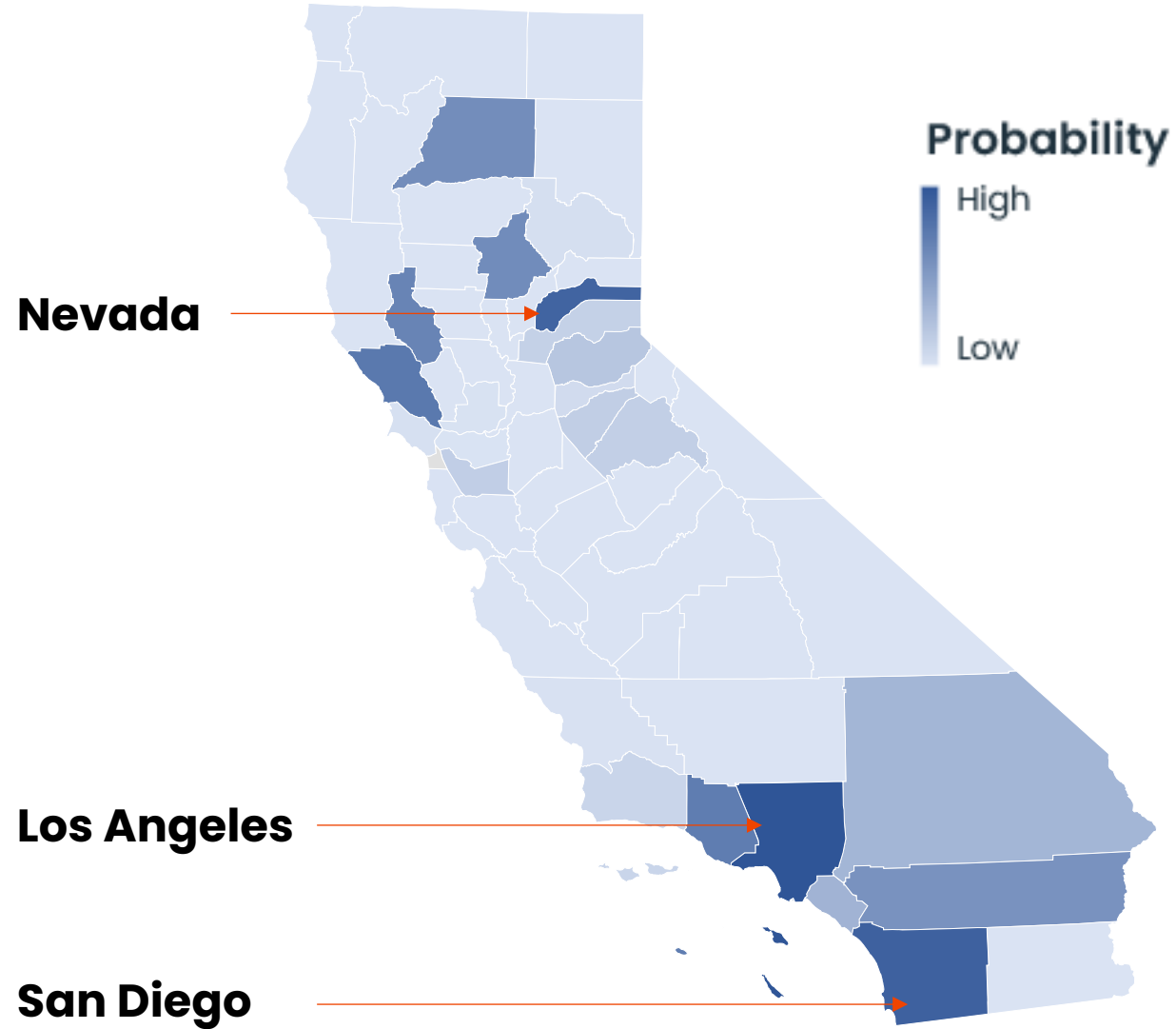
- Strong offshore winds (40+ mph; consistent with local meteorological records)
- Low humidity summer conditions
- Heavy Timber Litter and Understory chaparral fuels supports larger fires

Rapid spread during offshore dry-wind events in late summer-fall season

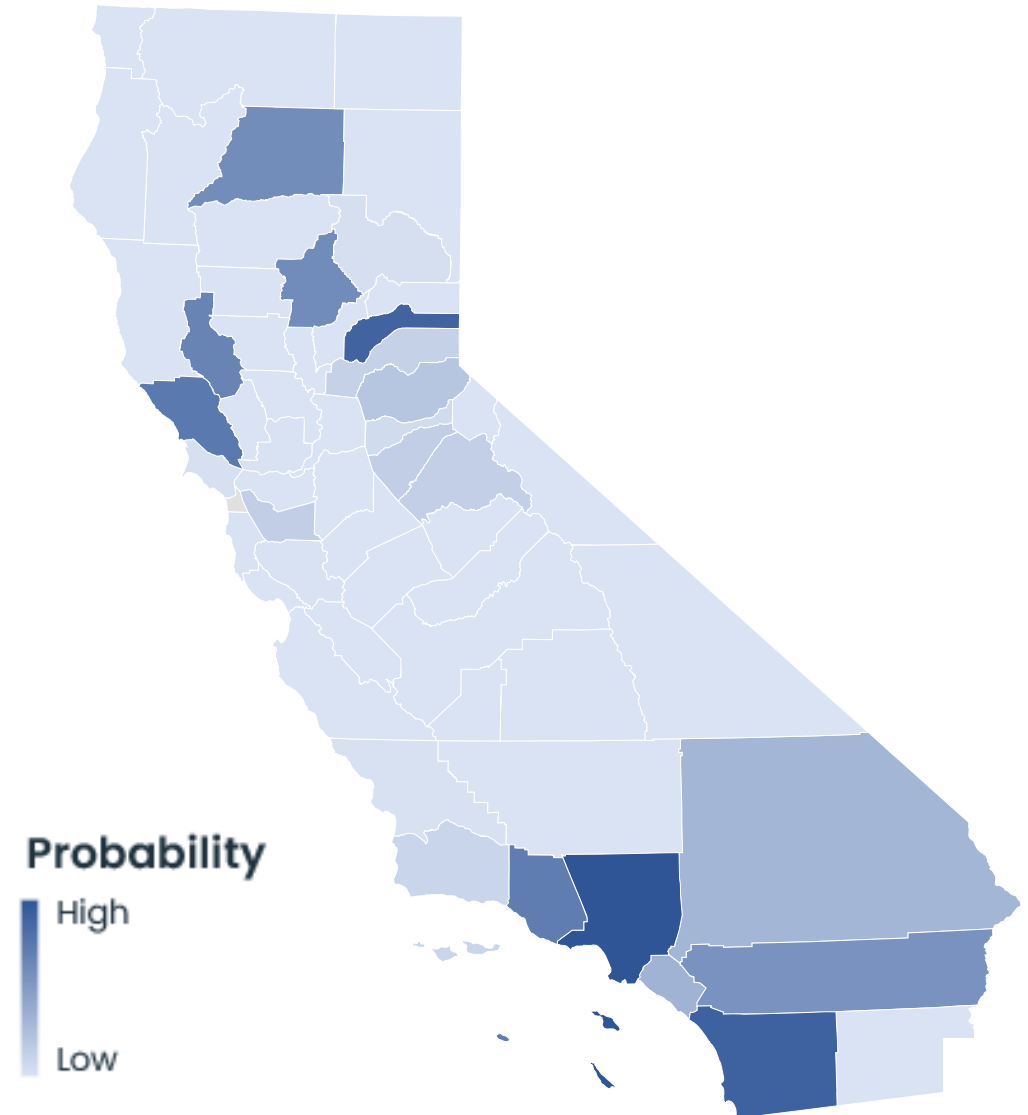
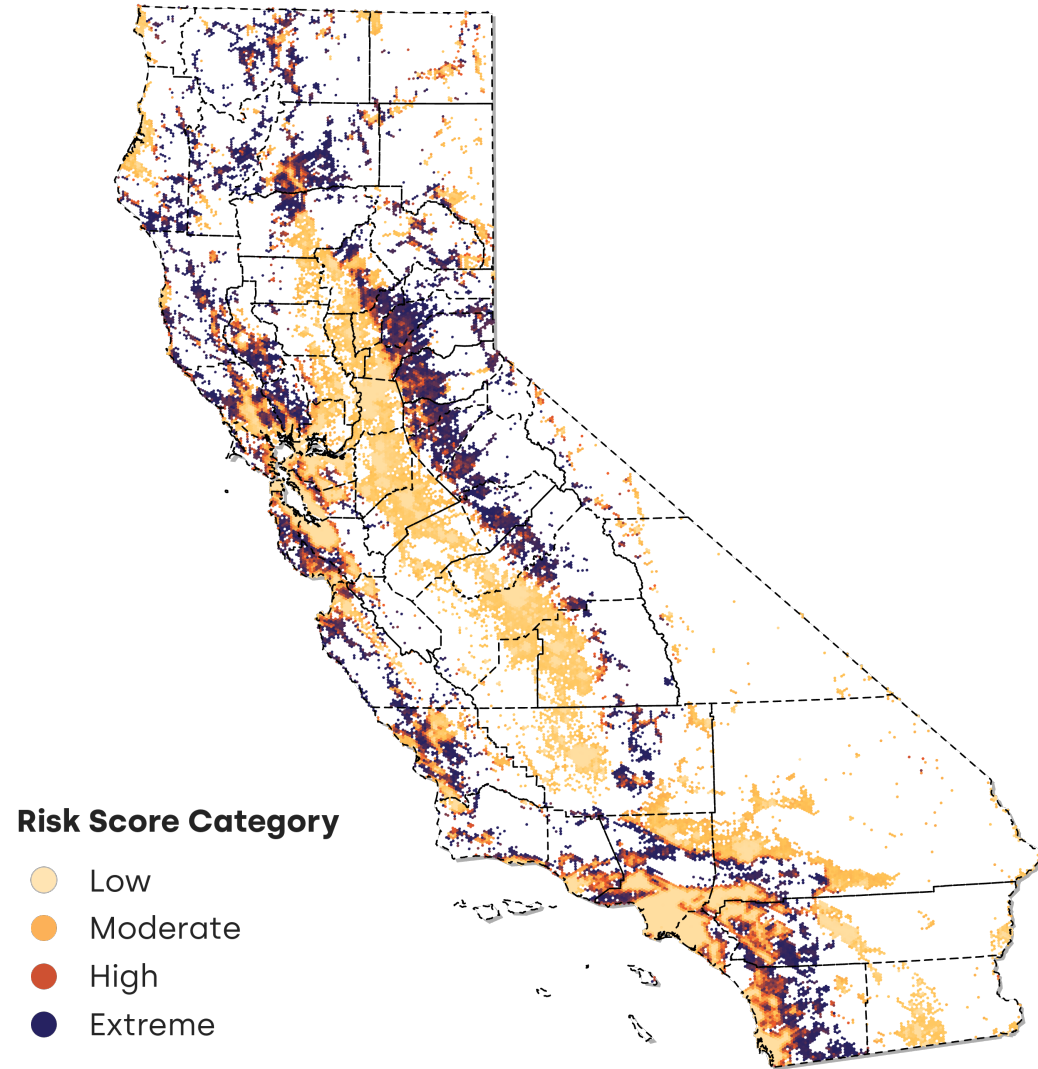


Probability of a 2% Event OEP by County

Identifying the most at risk counties



Utilizing the right tools to limit the risk in your portfolio



Times are changing and you should be ready

STATE OF CALIFORNIA
DEPARTMENT OF INSURANCE
300 Capitol Mall, 17th Floor
Sacramento, CA 95814

WORKSHOP DRAFT TEXT OF REGULATION

CATASTROPHE MODELING AND RATEMAKING

March 14, 2024

REG-2023-00010

Adopt Section 2644.4.5. Use of Catastrophe Models.

(a) Permitted uses.

CoreLogic US Wildfire Model



Broadly used in catastrophe risk management

\$350 Million in cat bond support (2020 to date)



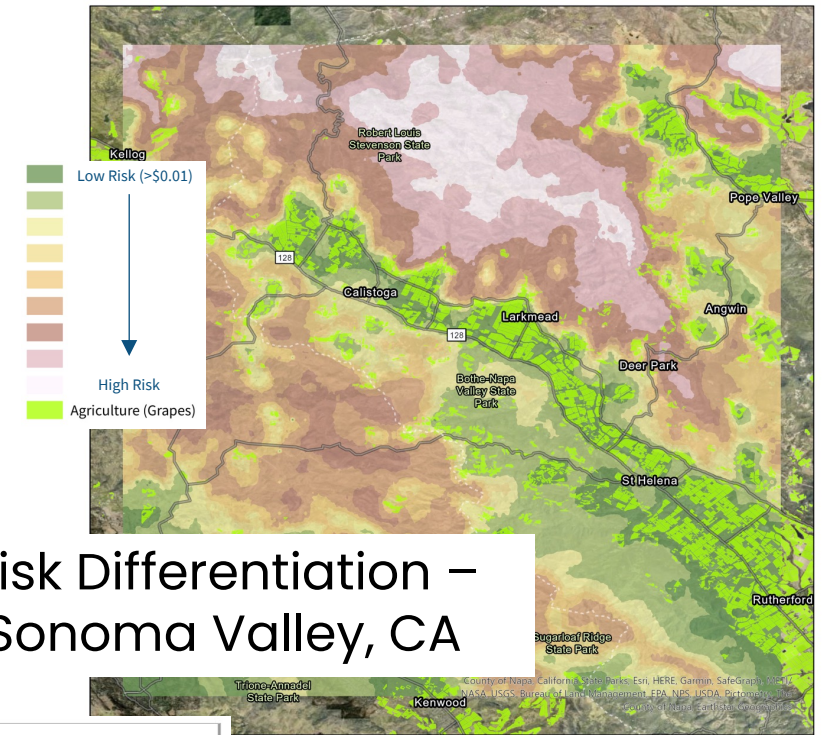
The most granular wildfire risk model

No loss surprises

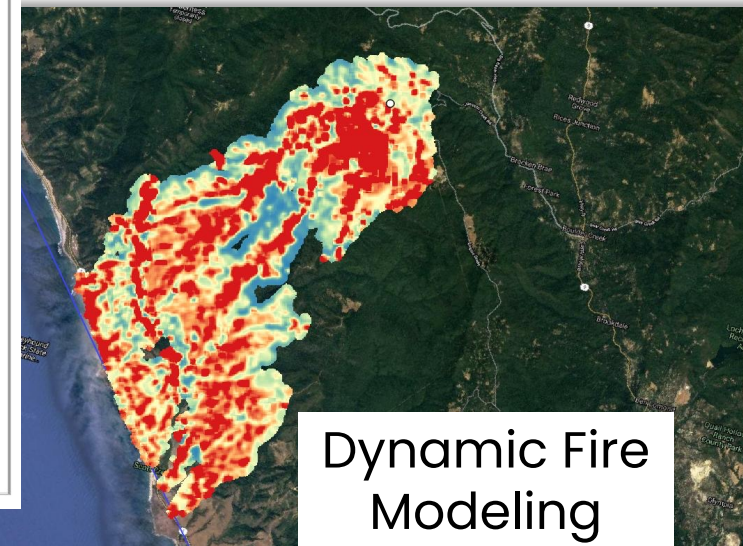
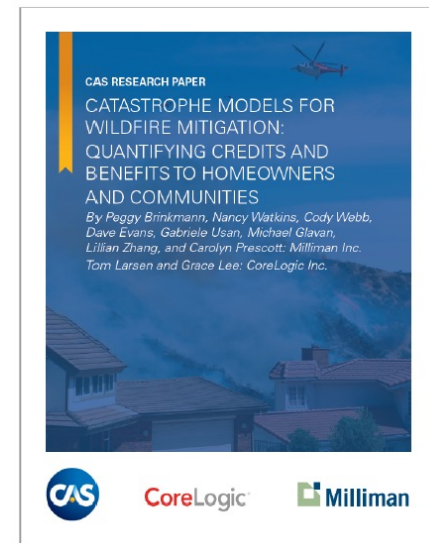


Thought leader in wildfire risk

Urban conflagration
Wildfire smoke
Research



Risk Differentiation – Sonoma Valley, CA



Severe Convective Storm

Forensic-based footprints as anchor to reality

Accurate Peril Footprints Enable:

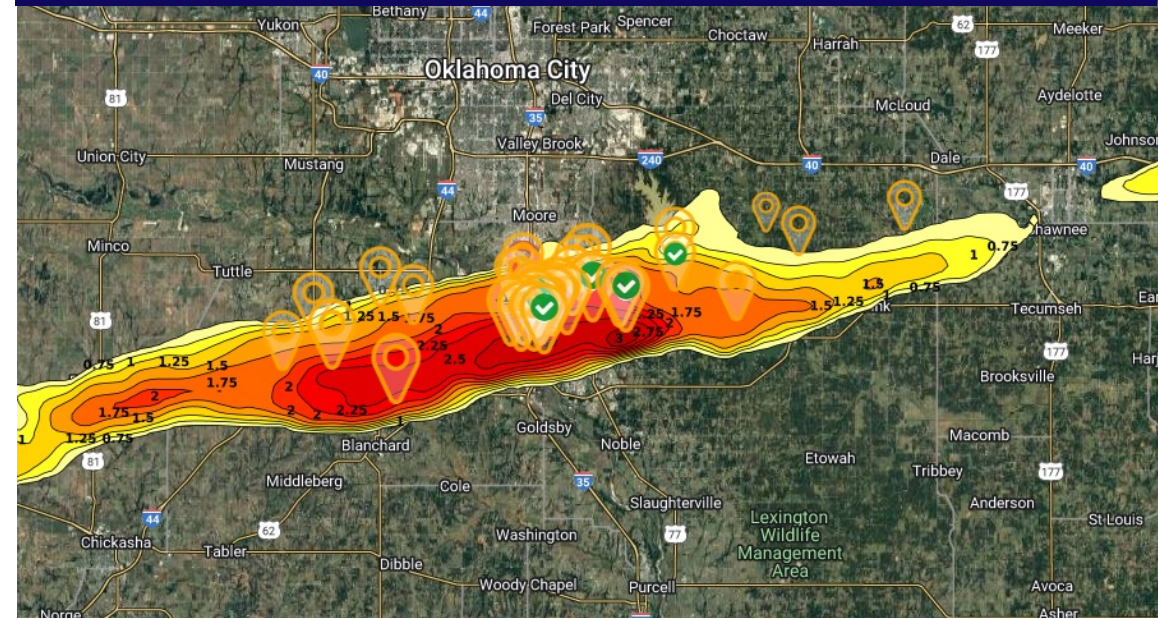
Improved Event Representation

Event Frequency

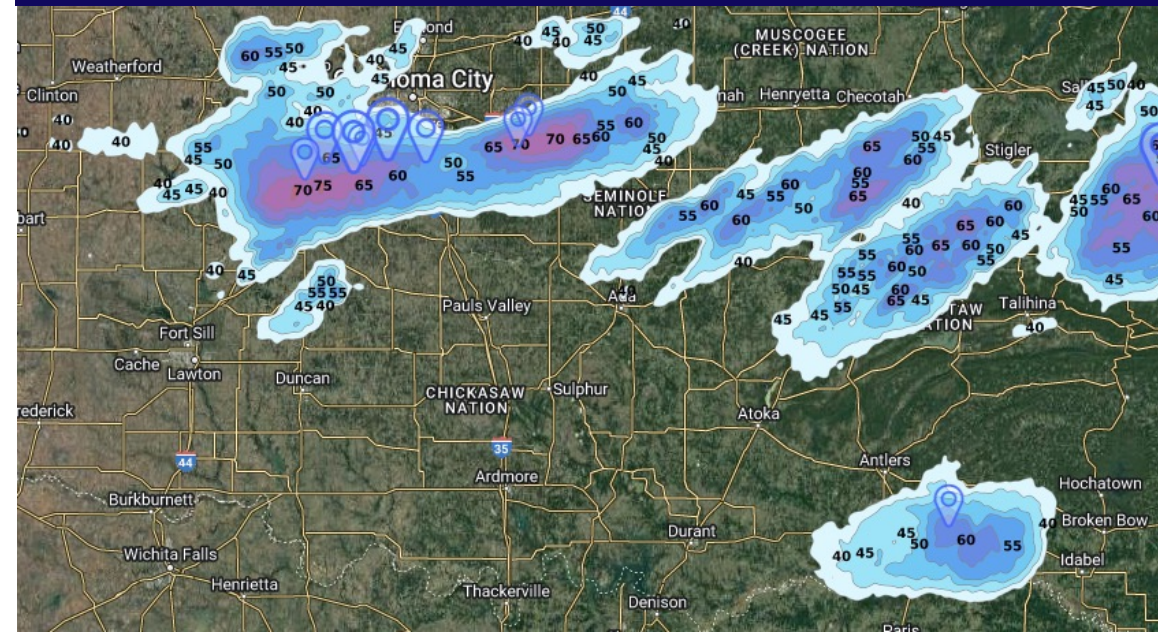
Event Severity

Claims Calibration

Hail Verification Technology

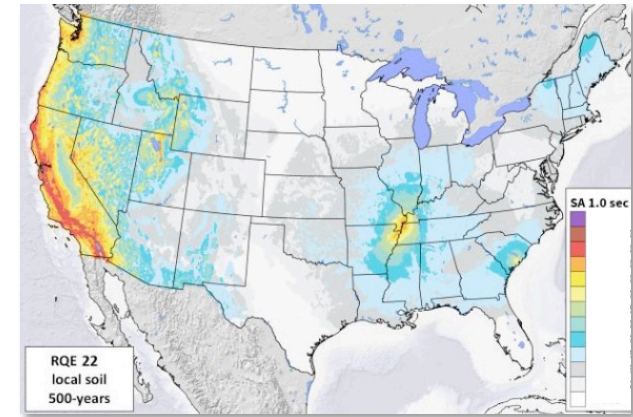


Wind Verification Technology



US Earthquake Model

Leading model incorporating 2018 USGS



Consistent
First adopter



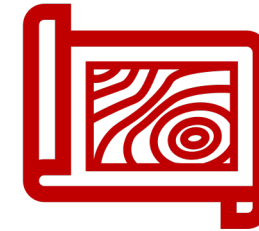
**Ground Shake,
Liquefaction,
Landslide, Fire
Following and
Sprinkler Leakage**



**Dr. Ken Campbell,
world-renowned
expert in ground
motion modeling**



**Time Dependent
probabilities**



**Latest high-res
local soil (Vs30)
maps to 90m**















**CEA's exclusive
model for setting
rates since 1995**

CATASTROPHE MODELS - Peril and Region

Central America

-   Costa Rica
-   El Salvador
-   Guatemala
-   Honduras
-  Nicaragua
-  Panama

South America

-   Columbia
-   Venezuela
-   Argentina
-   Brazil
-   Chile
-  Ecuador
-  Peru

Middle East

-   Oman
-   United Arab Emirates
-   Yemen
-   Israel
-   Lebanon
-   Turkey
-  Qatar
-  Saudi Arabia
-  Bahrain

North America

-    United States
-   Mexico
-  Canada

Caribbean/Atlantic

-   Anguilla
-   Antigua & Barbuda
-   Aruba
-   Bahamas
-   Barbados
-  Bermuda
-   British Virgin Islands
-   Cayman Islands
-  Cuba
-   Dominica
-   Dominican Republic
-  Grenada
-   Guadeloupe
-   Haiti
-   Jamaica
-   Martinique
-   Montserrat
-   Netherlands Antilles
-   Puerto Rico
-   St. Kitts & Nevis
-   St. Lucia
-   St. Vincent & the Grenadines
-   Trinidad and Tobago
-   Turks and Caicos
-   Virgin Islands, U.S.

Europe

-    Germany
-   Austria
-   Belgium
-   Cyprus
-   Czech Republic
-   Denmark
-   Estonia
-   Finland
-   France
-   Greece
-   Hungary
-   Ireland
-   Italy
-   Latvia
-   Lithuania
-   Luxembourg
-   Malta
-   Monaco
-   Netherlands
-   Norway
-   Poland
-   Portugal
-   Romania
-   Slovakia
-   Spain
-   Sweden
-   Switzerland
-   United Kingdom

Asia/Pacific

-   Australia
-   China
-   Hong Kong
-   India
-  Indonesia
-   Japan
-   Macao
-   Malaysia
-   New Zealand
-   Pakistan
-   Philippines
-  Singapore
-   South Korea
-   Taiwan
-   Thailand
-  Vietnam

Africa

-  Kenya
-  Malawi
-  South Africa
-  Reunion

- Wildfire 
- Earthquake 
- Offshore Energy 
- Convective Storm 
- Winterstorm 
- Flood 
- Windstorm 
- Cyclone 
- Typhoon 
- Hurricane 

A CoreLogic managed, Catastrophe Modeling SaaS solution, providing easy access to the full suite of CoreLogic cat models.



Hassle-free IT life



Secure



Scalable



Same model results



Web browser User Interface



Controllable costs

The screenshot displays the 'Navigate' SaaS interface. At the top, there's a navigation bar with 'Navigate' logo, 'Create New', 'Portfolio Manager', and 'Analysis Manager' tabs. A currency dropdown is set to '\$USD'. Below the navigation bar is a header with the text 'Navigate catastrophe risk with precision.' The main content area features a 'Portfolio Name' field with the value 'Portfolio-06-06-2024-151720' and an 'Analysis Template' dropdown menu. There's a checkbox for 'Auto validate and run analysis.' Below these fields is a large upload area with a circular arrow icon and the text 'Drop files here to upload'. It offers two options: 'Select from AWS | S3' and 'Upload from your computer'. A note below states 'The following are acceptable file types: csv'. At the bottom right of the upload area are 'Cancel' and 'Submit' buttons. On the right side, there's a 'Your Recent Activity' sidebar with a scrollable list of recent actions, including viewing analysis results, viewing portfolios, and importing files. At the bottom, there's an 'Active Queue' section with a table header: 'User', 'Portfolio Name', 'Import Progress', 'Analysis Template Name', 'Analysis Progress', and 'Action'. The table content shows 'There is nothing in queue.'

Earthquake Currently Available

Oasis / CoreLogic Integration

Please come talk to us about other models of interest



Thank you

©2024 CoreLogic, Inc. All rights reserved. The CoreLogic® statements and information in this presentation may not be reproduced or used in any form without express written permission. While all the CoreLogic statements and information are believed to be accurate, CoreLogic makes no representation or warranty as to the completeness or accuracy of the statements and information and assumes no responsibility whatsoever for the information and statements or any reliance thereon.